

WWW.SESHREDDERS.COM

## OUR PRODUCTS

# FOURSHAFT SHREDDER DUAL \* DUAL SHEAR





# FOURSHAFT SHREDDER DUAL\* DUAL SHEAR



## TECHNICAL SPECIFICATIONS

**Drive:** Electrical

**Number of Motors:** Three

**Power:** 2\*55 & 1\*75kw

**Rotor:** Four rotors

**Range Voltage:** 380 volt

**Options Autochop:** Included

**Feature Shock Load Protection :** Yes  
(Multiple Relief)

**Cutting Chamber (WxL)\*:**  
1200x1200mm

**Machine Length:** 5000m

**\*Machine Width:** 1600mm

**Machine Height:** 2500mm

**Machine Weight:** 10.000kg

**Hopper Opening:** 2000x2000mm

**Hopper Height:** 750mm

**Stand Height:** 1000mm

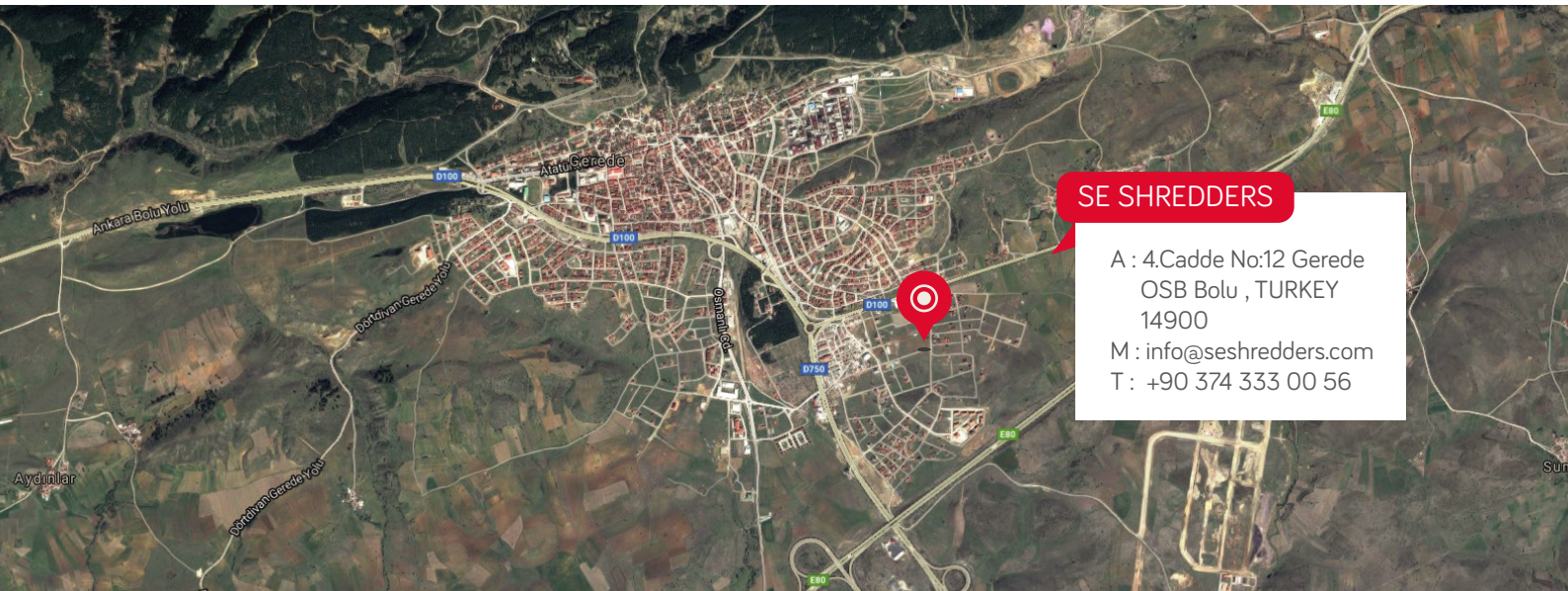
**Cutterset:** Weld Filled With Hard  
Steel Alloy

**Working Pressure:** Up to 250 bar

**Manufactured for:** As primary shredder for wood, agricultural wastes; converting metal shavings to metal sawdust before pelletizing

As secondary shredder for RDF, SRF, - municipal wastes.

**Capacity:** 3000-4000kg/hr



### SE SHREDDERS

A : 4.Cadde No:12 Gerede  
OSB Bolu , TURKEY  
14900

M : info@seshredders.com  
T : +90 374 333 00 56

[WWW.SESHREDDERS.COM](http://WWW.SESHREDDERS.COM)