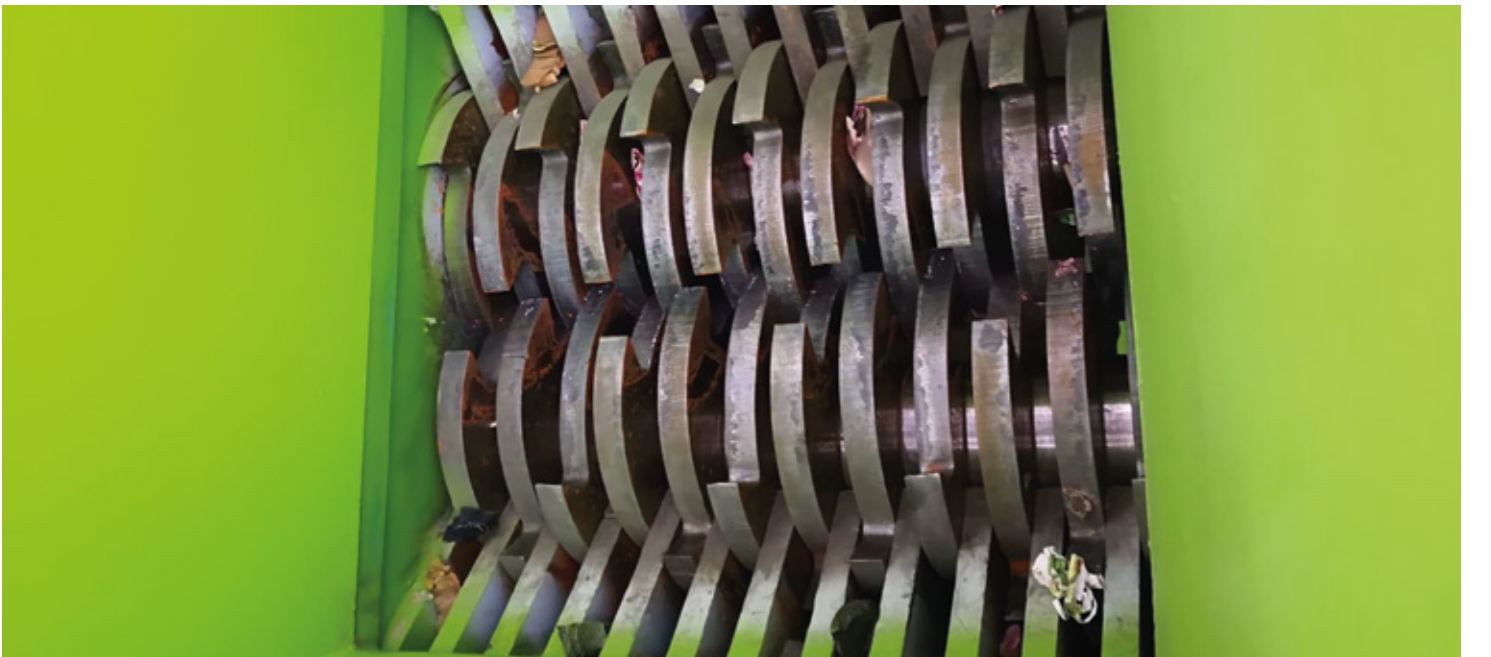


WWW.SESHREDDERS.COM

OUR PRODUCTS

DUAL SHEARS SH-45





DUAL SHEARS SH-45



TECHNICAL SPECIFICATIONS

Drive: Hydraulic

Number of Motors: Two

Power: 2x45KW

Voltage: 380 volt

Rotors: Dual Rotors

Autochop Feature: Included

Shock Load Protection : Yes
(Multiple Relief)

Working Pressure: up to 250 Bar

Cutting Chamber(WxL)*:
800x900 mm

Machine Length: 3500mm

Machine Width: 1000mm

Machine Height: 2500mm

Machine Weight: 4500kg

Hopper Opening: 2000mm

Hopper Height: Customer request

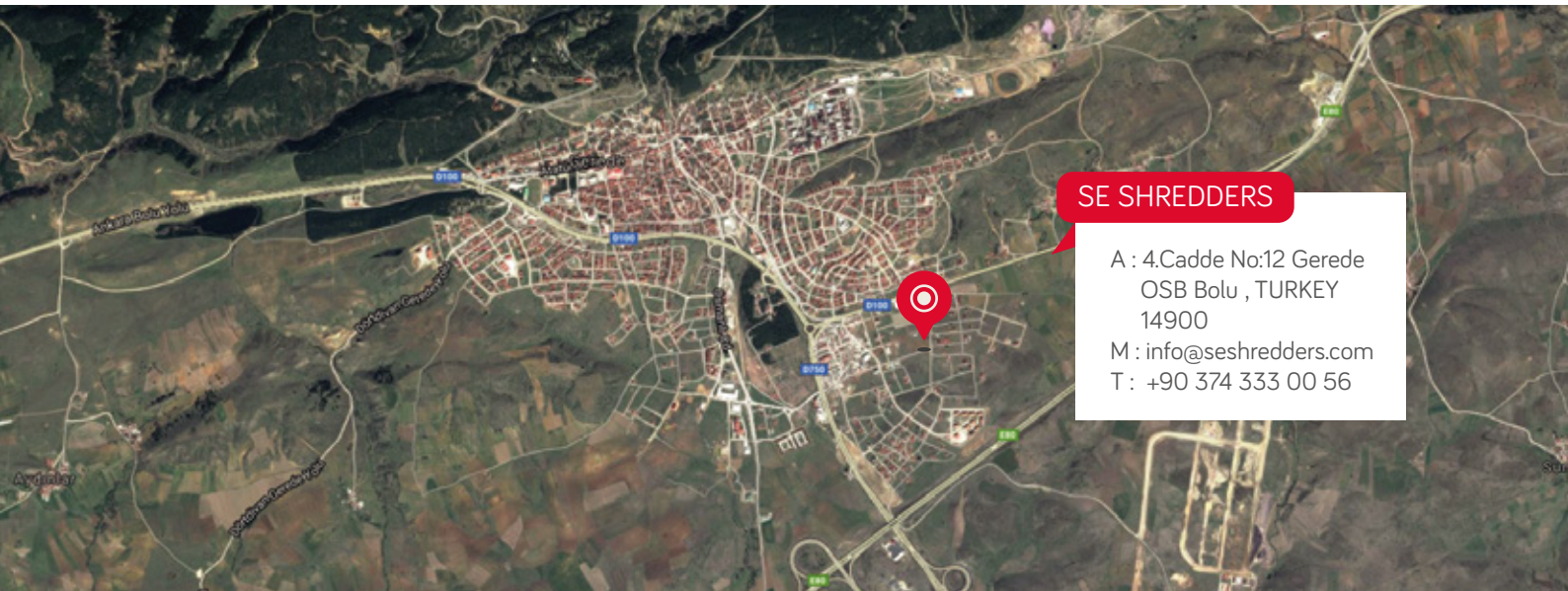
Stand Height: Customer Request

Manufactured for: RDF, SRF, Light
Metal, Wooden Pallets

HPU Dimensions: Customer request

HPU Weight: 1400kg

Capacity: 2000-3000kg/hr



WWW.SESHREDDERS.COM